

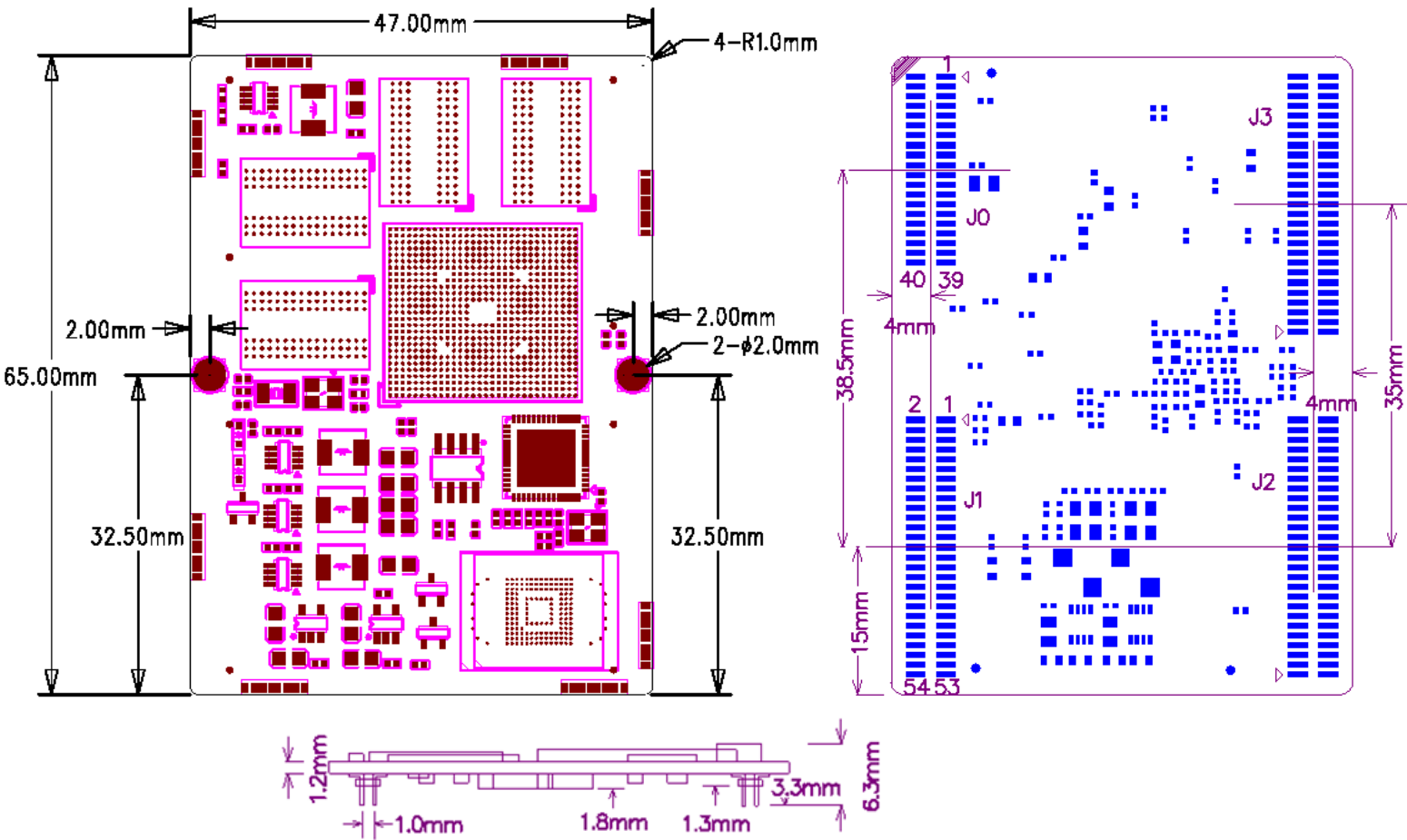
MINI4412

Interface Connection



1 PCB Dimension

Figure 1. PCB Dimension

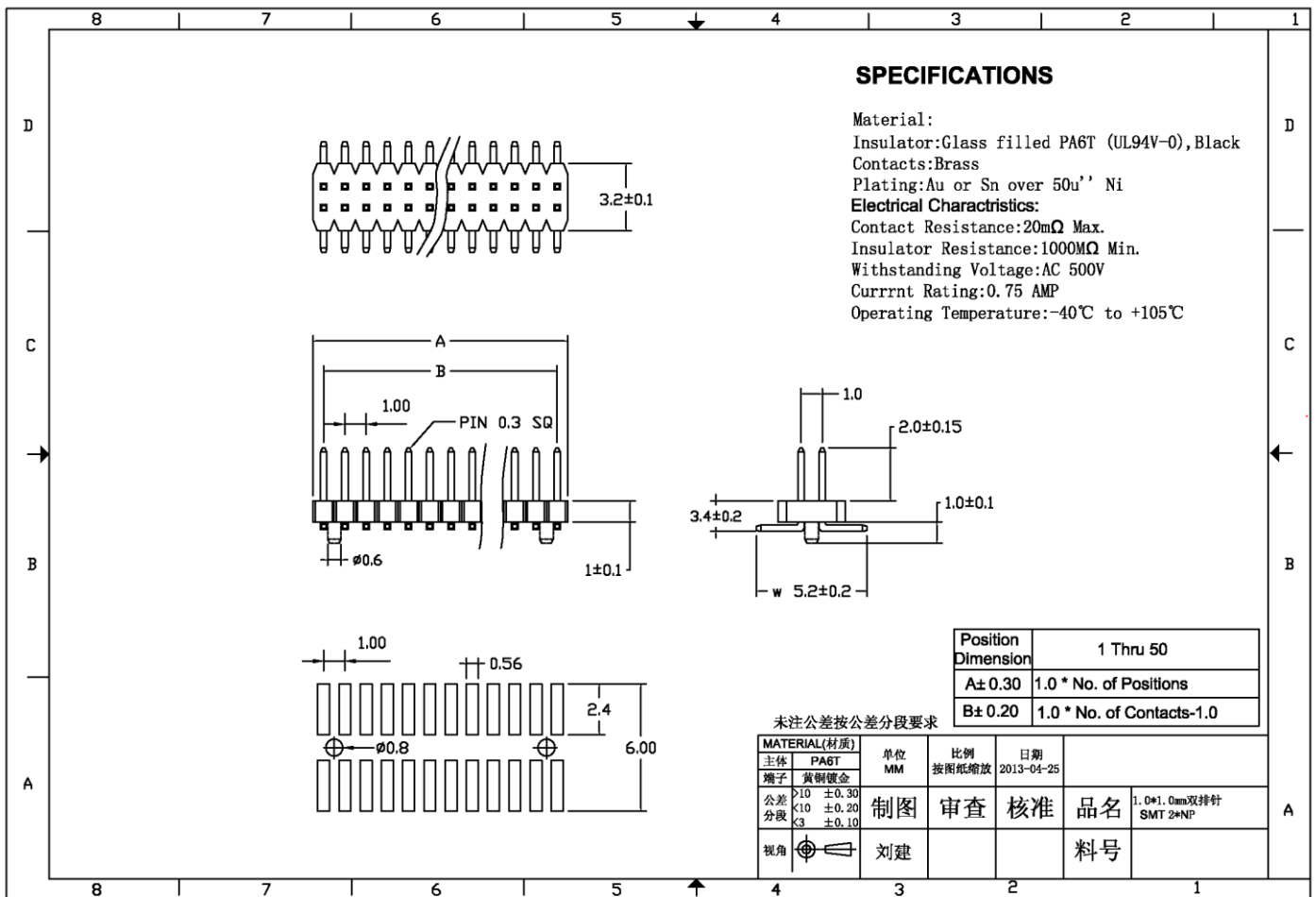
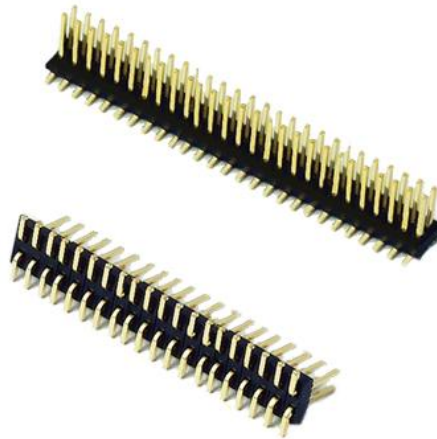


2 Interface Connection

MINI4412 uses 3pcs 54Pin (2*27P) and 1pcs 40Pin (2*20P) 1.0mm pitch, 1.0mm height SMT Pin Header as the connectors. The male connector (SMT Type) is on the CPU board, and the female connector (DIP Type) is on the baseboard

2.1 Pin Headers Specifications (male connector)

Figure 2. Pin Header (male connector)



2.2 Female connector Specifications

Figure 3. Female connector

