

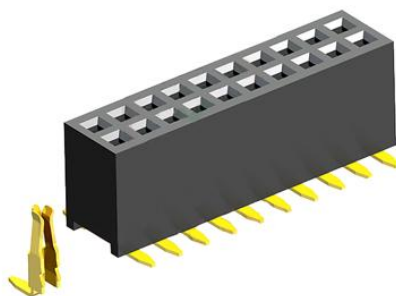
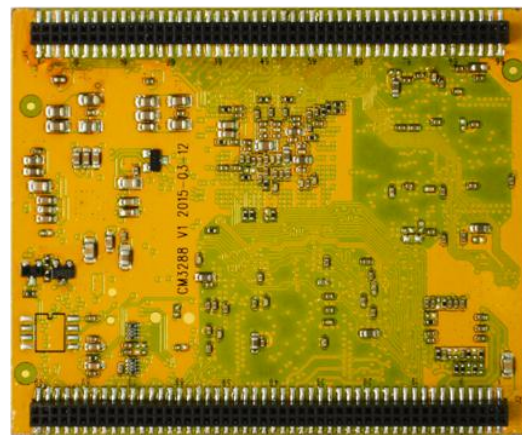
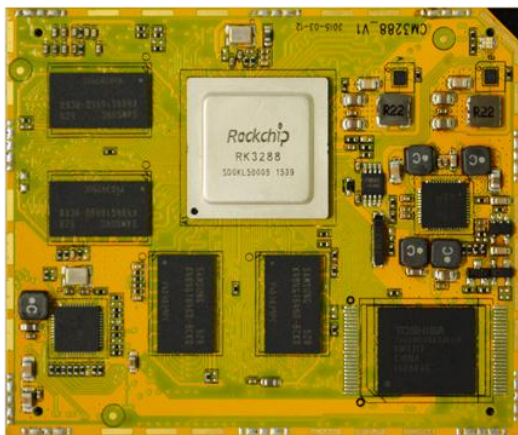
**MINI3066**

**MINI3288**

**MINI4418**

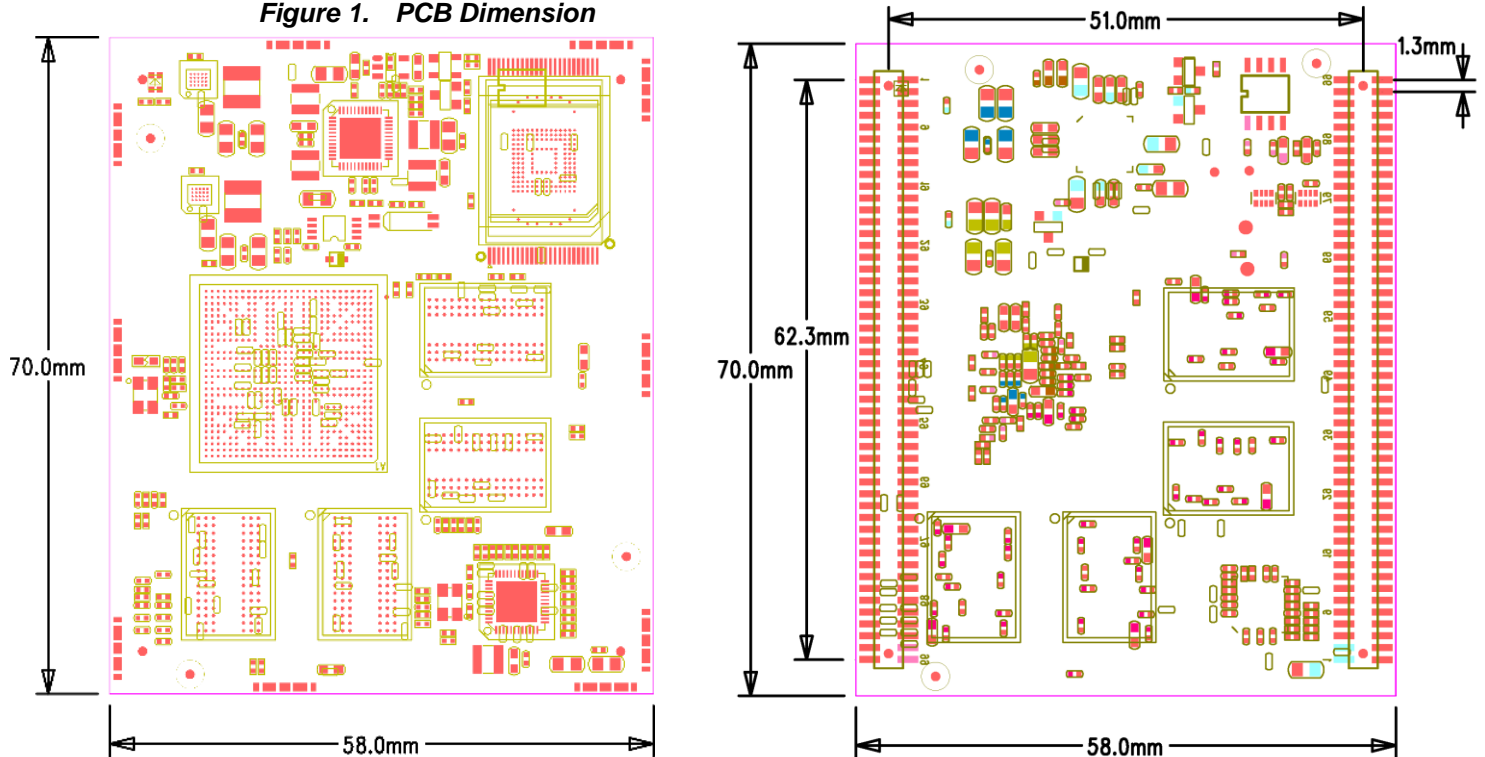
---

## Interface Connection



## 1 PCB Dimension

**Figure 1. PCB Dimension**

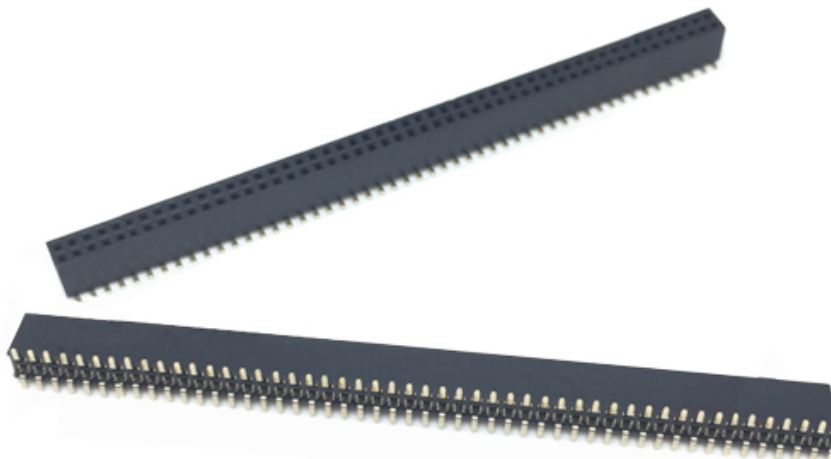


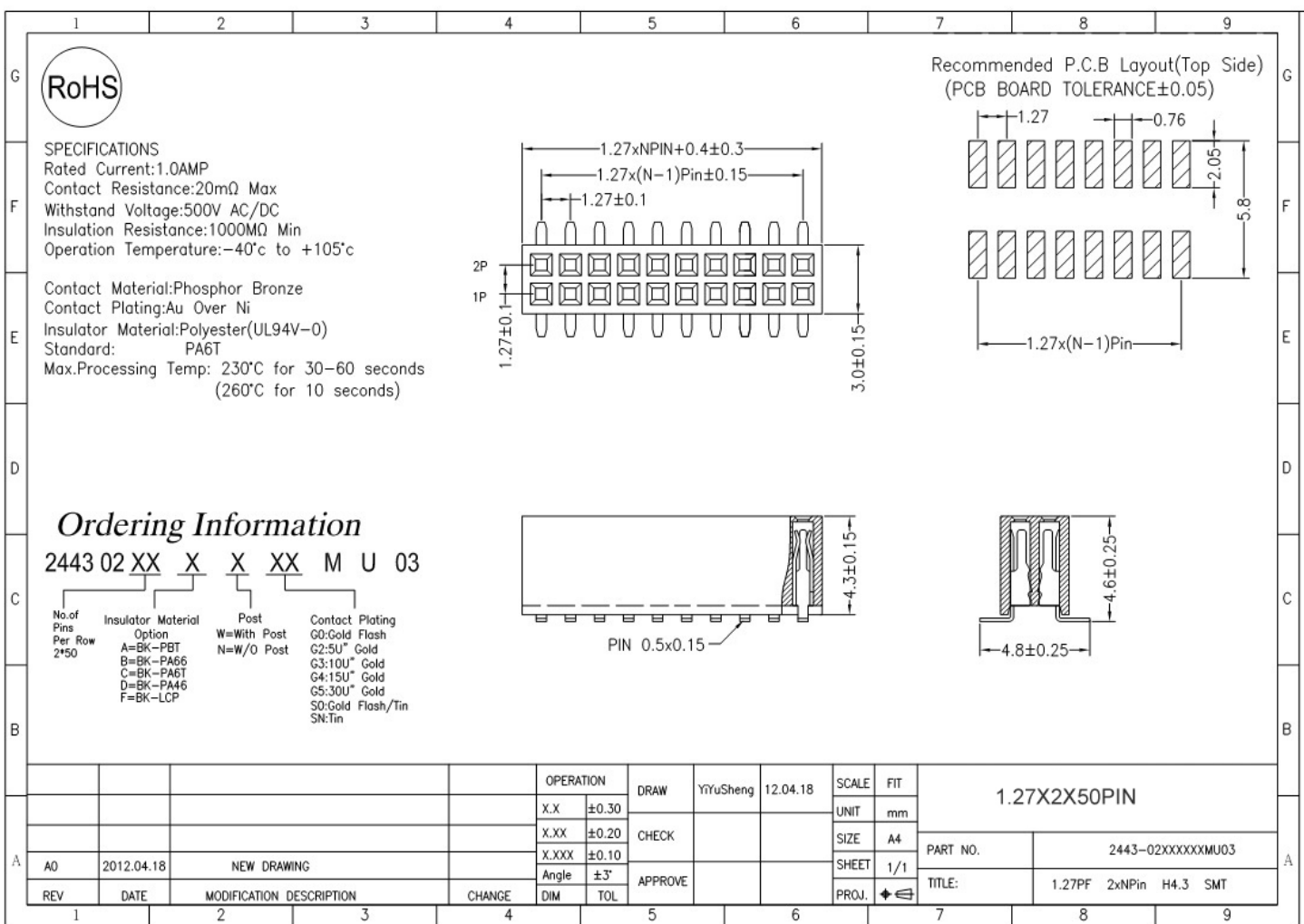
## 2 Interface Connection

MINI3066 / MINI3288 / MINI4418 use two 100Pin (2\*50P) 1.27mm pitch SMT Female Header as the connectors. The female connectors on the CPU board, and the male connectors on the baseboard.

### 2.1 Female Header Specifications (female connector)

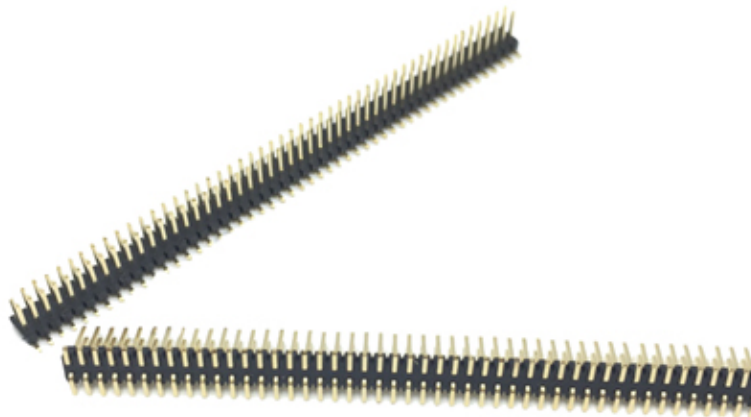
**Figure 2. Female Pin Header (female connector)**





## 2.2 Pin Headers Specifications (male connector)

**Figure 3. Pin Header (male connector)**



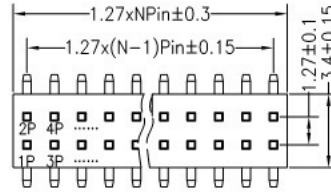


RoHS

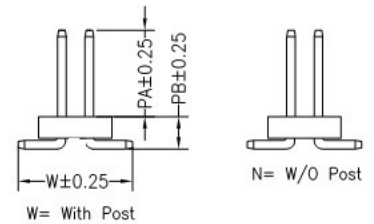
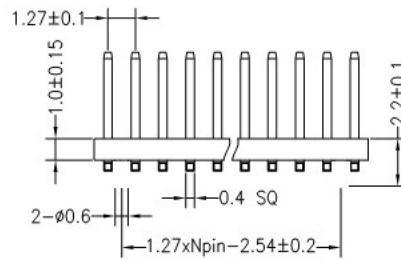
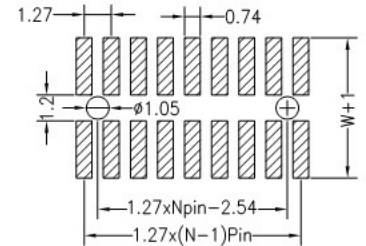
#### SPECIFICATIONS

Rated Current:1.0AMP  
Contact Resistance:20mΩ Max  
Withstand Voltage:500V AC/DC  
Insulation Resistance:1000MΩ Min  
Operation Temperature:-40°C to +105°C

Contact Material:Brass  
Contact Plating:Au or Sn Over Ni  
Insulator Material:Polyester(UL94V-0)  
Standard: PA6T  
Max.Processing Temp: 230°C for 30-60 seconds  
(260°C for 10 seconds)



#### Recommended P.C.B Layout(Top Side) (PCB BOARD TOLERANCE±0.05)




#### Ordering Information

1410-1 2 XX X X XX M XXX 01

No. of Pins Per Row 2\*50  
Insulator Material Option  
A=BK-PBT  
B=BK-PA66  
C=BK-PA6T  
D=BK-PA46  
F=BK-LCP  
Post W=With Post N=W/O Post  
Contact Plating  
G0:Gold Flash  
G2:50U" Gold  
G3:10U" Gold  
G4:15U" Gold  
G5:30U" Gold  
S0:Gold Flash/Tin  
SN:Tin  
Pin Length

Dimension antitheses list				
ITEM	PB	PA	W	L
Standard	1.50	4.00	5.30	7.20
Alternate				

				OPERATION		DRAW	YiYuSheng	12.04.19	SCALE	FIT	1.27X2X50PIN	
				X.X	±0.30				UNIT	mm		
				X.XX	±0.20	CHECK			SIZE	A4		
				X.XXX	±0.10				SHEET	1/1		
A0	2012.04.19	NEW DRAWING		Angle	±3°	APPROVE			PROJ.		PART NO.	1410-12XXXXXXMXXX01
REV	DATE	MODIFICATION DESCRIPTION	CHANGE	DIM	TOL				TITLE:	1.27PH 2xNPin H1.0 SMT		